



SPINETIX

Elementi

Widgets

Quick Guide

Elementi 2016 4.1

System Requirements

Windows

- Microsoft® Windows® 10, Windows® 8.1, Windows® 7 with Service Pack 1, Windows® Vista with Service Pack 2.
- 32-bit or 64-bit processor (Elementi is a 32-bit application, but it also runs on a 64-bit processor)
- 200 MB of available hard-disk space for installation
- Intel® Pentium® 4, AMD Athlon® 64 processor, or newer that support SSE2 instruction set
- 4GB of RAM
- Resolution above 1024x768 DirectX 9.0c or later with 32-bit color

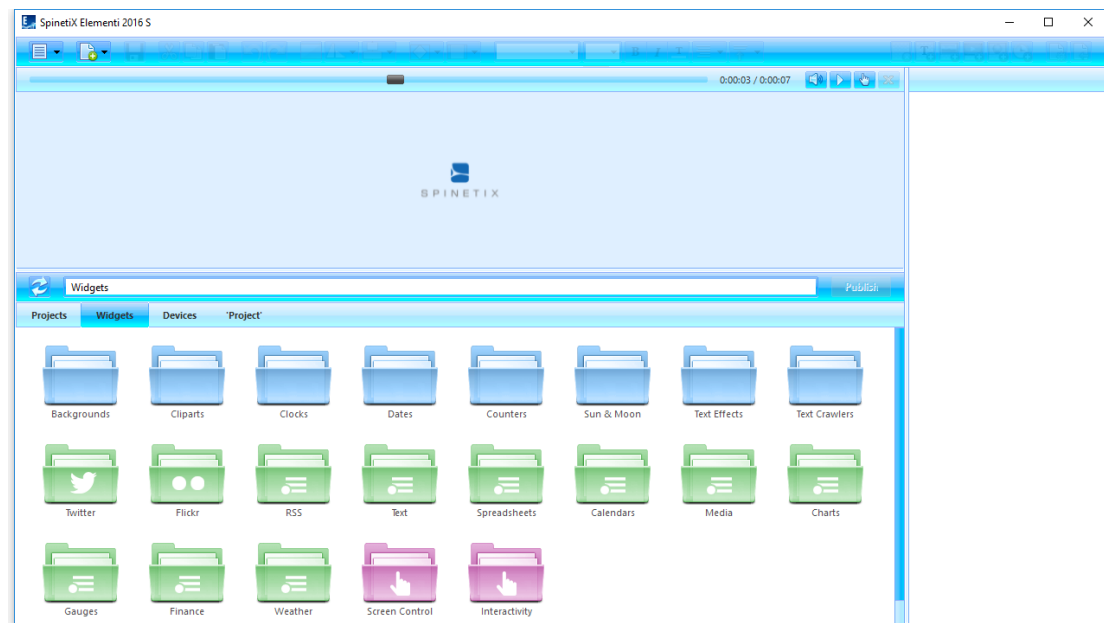
Elementi cannot be used without activation. Internet connection is required for download, activation, and reactivation.

Notes

- *Mac OS is not supported, however Boot Camp (with or without Parallels Desktop) runs compatible versions of Microsoft® Windows® or Intel-based Mac*
- *Linux OS is not supported*
- *Windows® Server OS is not supported*
- *Virtual machine is not recommended mostly for performance reasons*

Widgets

Widgets are ready to use digital signage components.

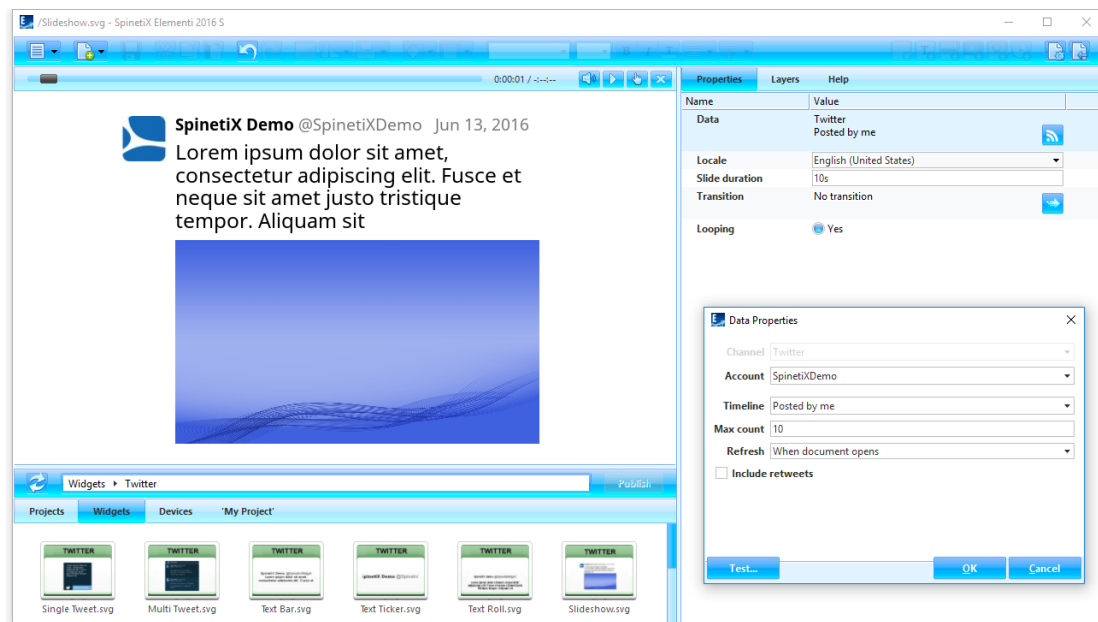


The following widgets are included in Elementi:

Backgrounds	selection of background images
Cliparts	selection of cliparts
Clocks	selection of analogue and digital clock widgets
Dates	selection of date widgets in different calendars
Counters	selection of counter widgets
Sun & Moon	selection of widgets to display Sun and Moon times
Text Effects	selection of advanced text effects
Text Crawlers	selection of widgets to display crawling text
Twitter	selection of widgets to display Twitter data (<i>see p7</i>)
Flickr	selection of widgets to display Flickr data (<i>see p8</i>)
RSS	selection of widgets to display RSS data (<i>see p9</i>)
Text	selection of widgets to display text (<i>see p10</i>)
Spreadsheets	selection of widgets to display spreadsheet data (<i>see p11</i>)
Calendars	selection of widgets to display calendar data (<i>see p12</i>)
Media	selection of widgets to display media (<i>see p13</i>)
Charts	selection of widgets to display data as charts
Gauges	selection of widgets to display data as gauges
Finance	selection of widgets to display financial data (<i>see p14</i>)
Weather	selection of widgets to display weather (<i>see p15</i>)
Screen Control	selection of widget to control display/s (on/off, volume, etc.)
Interactivity	selection of widgets to create interactivity content

Twitter Widgets

Twitter widgets enable users to display tweets, media, etc. posted on their Twitter account.



Twitter Widgets' Selection


There are many Twitter widgets to choose from: **Single Tweet**, **Multi Tweet**, **Text Bar**, **Text Ticker**, **Text Roll** and **Slideshow**.

Editing Twitter Widgets

To edit, simply drag and drop the chosen widget to layout, playlist or schedule. The chosen widget will be automatically copied into the current project.

Twitter Properties

To setup widget:

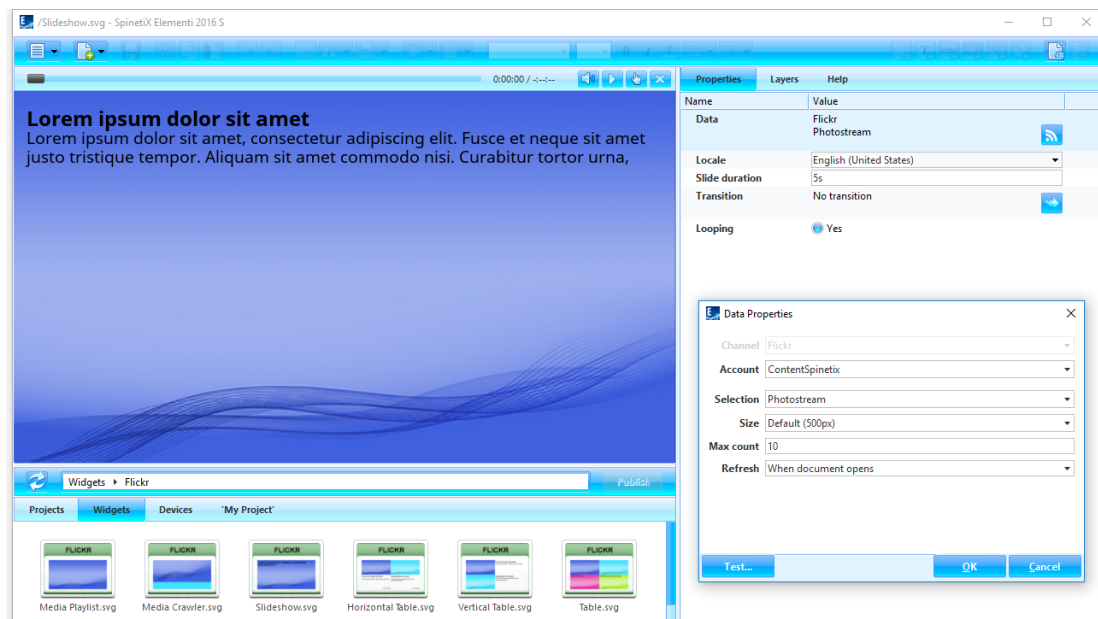
1. Click on this button , and the Twitter channel will be already allocated,
2. Connect own Twitter account via Cockpit which takes only few minutes, and it is done only once,
3. Customize furthermore as needed.

Tech Support

Learn more about Twitter widgets: support.spinetix.com/wiki/Twitter_widgets

Flickr Widgets

Flickr widgets enable users to display photos, titles, etc. posted on their Flickr account.



Flickr Widgets' Selection


There are many Flickr widgets to choose from: **Media Playlist**, **Media Crawler**, **Slideshow** and **Table**.

Editing Flickr Widgets

To edit, simply drag and drop the chosen widget to layout, playlist or schedule. The chosen widget will be automatically copied into the current project.

Flickr Properties

To setup widget:

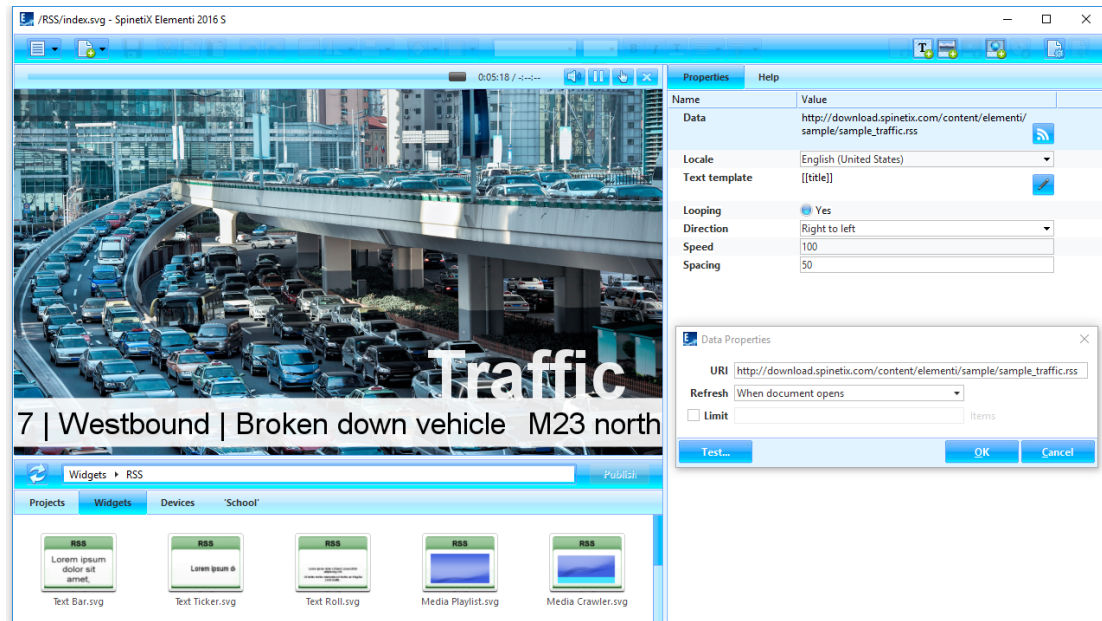
1. Click on this button , and the Flickr channel will be already allocated,
2. Connect own Flickr account via Cockpit which takes only few minutes, and it is done only once,
3. Customize furthermore as needed.

Tech Support

Learn more about Twitter widgets: support.spinetix.com/wiki/Flickr_widgets.

RSS Widgets

RSS widgets enable users to display a content such as news and video headlines, markets, sport events, etc. syndicated through RSS feed.



RSS Widgets' Selection

There are many RSS widgets to choose from: **Text Bar**, **Text Ticker**, **Text Roll**, **Media Playlist**, **Media Crawler**, **Slideshow** and **Table**.


Editing RSS Widgets

To edit, simply drag and drop the chosen widget to layout, playlist or schedule. The chosen widget will be automatically copied into the current project.

RSS Properties

Many RSS feeds such as CNN, Reuters, FT, etc. are widely available on the Internet.

To setup widget:

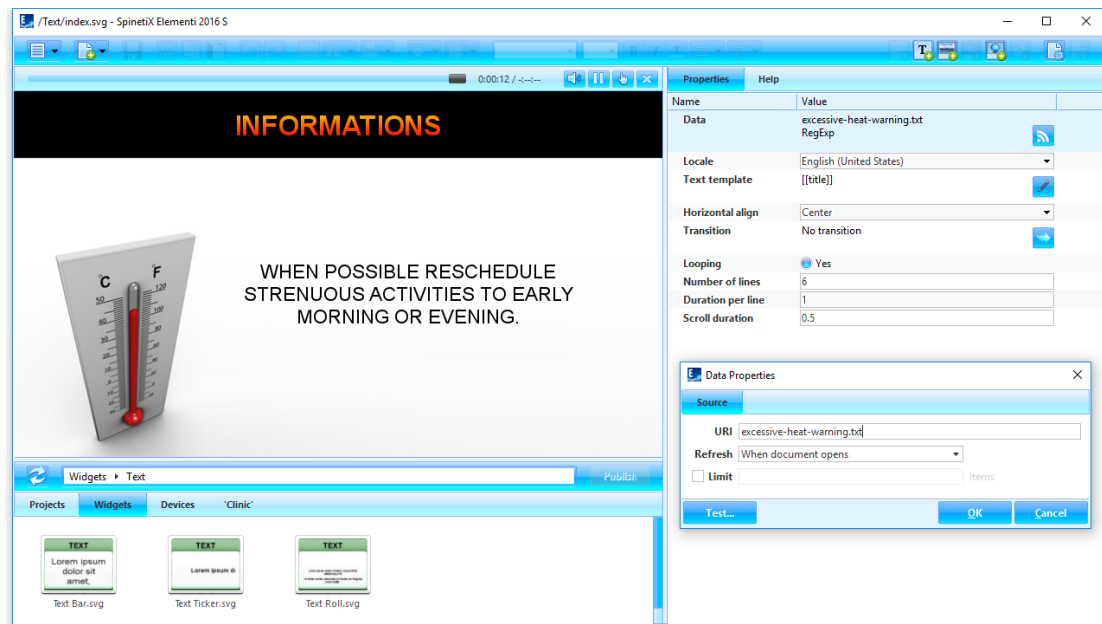
1. Click on this button ,
2. Enter the URI from where the data is retrieved,
3. Customize furthermore as needed.

Tech Support

Learn more about RSS widgets: support.spinetix.com/wiki/RSS_widgets

Text Widgets

Text widgets enable users to display information, notification, description, etc.



Text Widgets' Selection

There are three Text widgets to choose from: **Text Bar**, **Text Ticker** and **Text Roll**.


Editing Text Widgets

To edit, simply drag and drop the chosen widget to layout, playlist or schedule. The chosen widget will be automatically copied into the current project. The text can be easily styled, as well as animated.

Text Properties

The most common channels for Text widgets are files created with TextPad, Notepad, and Google Docs.

To setup widget:

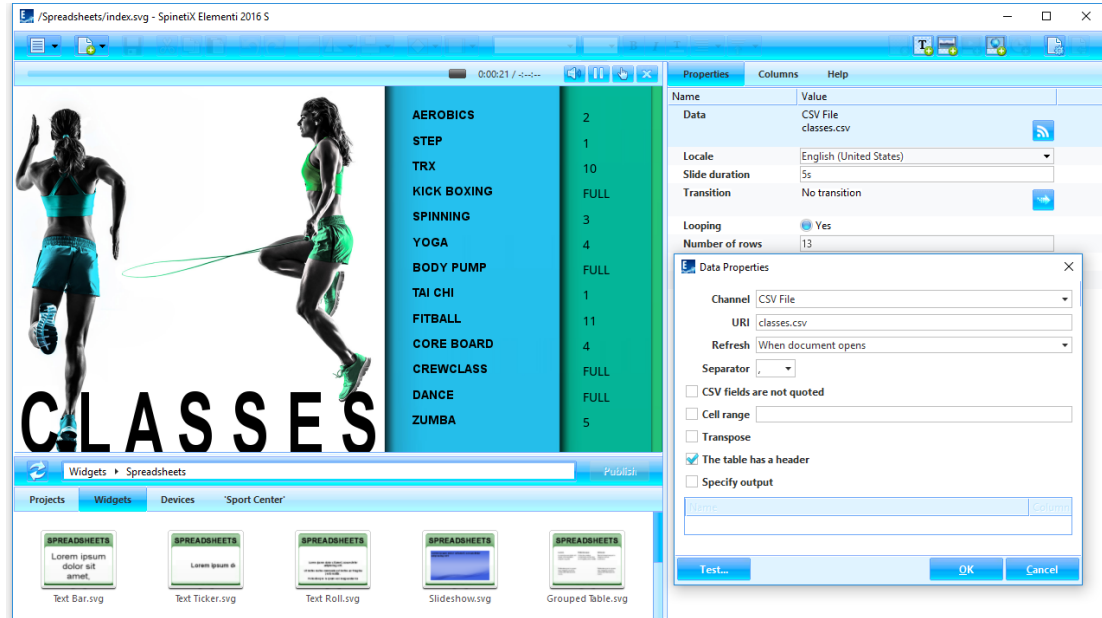
1. Click on this button ,
2. Enter the URI from where the data is retrieved,
3. Customize furthermore as needed.

Tech Support

Learn more about Text widgets: support.spinetix.com/wiki/Text_file_widgets

Spreadsheet Widgets

Spreadsheet widgets enable users to display sport results, price lists, production data and any other data natively arranged in rows and columns. They are the most popular widgets because of their power and flexibility.



Spreadsheet Widgets' Selection

There are many Spreadsheet widgets to choose from: **Text Bar**, **Text Ticker**, **Text Roll**, **Slideshow** and **Table**.


Editing Spreadsheet Widgets

To edit, simply drag and drop the chosen widget to layout, playlist or schedule. The chosen widget will be automatically copied into the current project. Spreadsheet widgets can be easily styled.

Spreadsheet Properties

The most common channels for Spreadsheet widgets are Microsoft Excel (xlsx and csv files) and Google Sheets.

To setup widget:

1. Click on this button ,
2. Select the channel - please note that for using Google Calendar you would need to connect own Google account via Cockpit which takes only few minutes, and it is done only once,
3. Customize furthermore as needed.

Tech Support

Learn more about Spreadsheet widgets: support.spinetix.com/wiki/Spreadsheet_widgets

Calendar Widgets

Calendar widgets enable users to display events such as meetings, room bookings, classes, etc.



Calendar Widgets' Selection

There are many Calendar widgets to choose from: **Text Bar**, **Text Ticker**, **Text Roll**, **Slideshow** and **Table**.


Editing Calendar Widgets

To edit, simply drag and drop the chosen widget to layout, playlist or schedule. The chosen widget will be automatically copied into the current project. Calendar widgets can be easily styled.

Calendar Properties

The most common channels for Calendar widgets are Microsoft Outlook (ICS files), Apple Calendar (ICS files) and Google Calendar.

To setup widget:

1. Click on this button ,
2. Select the channel - please note that for using Google Calendar you would need to connect own Google account via Cockpit which takes only few minutes, and it is done only once,
3. Customize furthermore as needed.

Tech Support

Learn more about Calendar widgets: support.spinetix.com/wiki/Calendar_widgets

Media Widgets

Media widgets enable users to automatically display media such as images and/or videos.



Media Widgets' Selection

There are three Media widgets to choose from: **Media Playlist**, **Media Crawler**, **Slideshow**, **Table Advanced** and **Table Horizontal**.


Editing Media Widgets

To edit, simply drag and drop the chosen widget to layout, playlist or schedule. The chosen widget will be automatically copied into the current project.

Media Properties

The Channels for Media widgets can be local (included in project), or remote (located on server).

To setup widget:

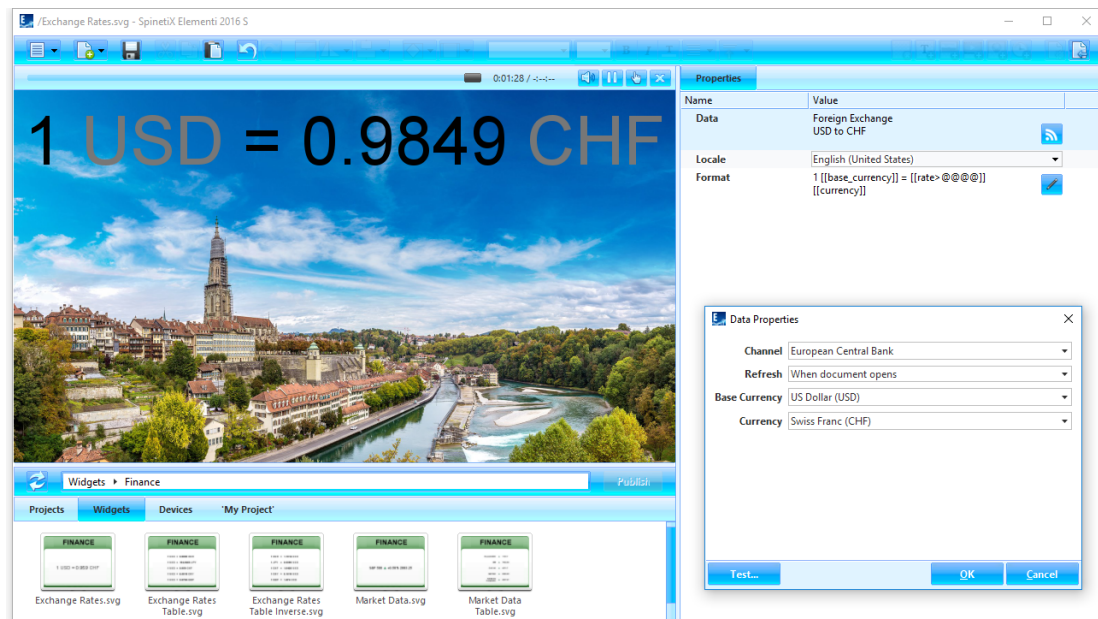
1. Click on this button ,
2. Enter the URI from where the data is retrieved,
3. Customize furthermore as needed.

Tech Support

Learn more about Media widgets: support.spinetix.com/wiki/Media_files_widgets

Finance Widgets

Finance widgets enable users to automatically display financial data such as exchange rate, market data, etc.



Finance Widgets' Selection


There are many Finance widgets to choose from: **Exchange Rate**, **Exchange Rate Table**, **Exchange Rate Table Inverse**, **Market Data**, and **Market Data Table**.

Editing Finance Widgets

To edit, simply drag and drop the chosen widget to layout, playlist or schedule. The chosen widget will be automatically copied into the current project.

Finance Properties

To setup widget:

1. Click on this button ,
2. Chose the financial channel,
3. Customize furthermore as needed.

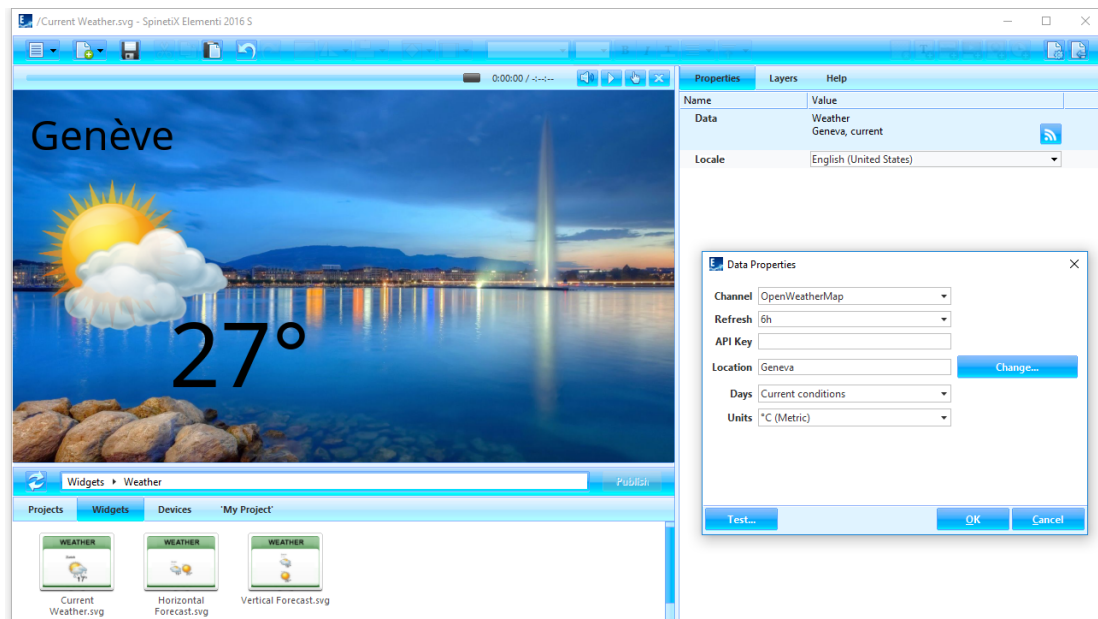
Please note that the finance data is provided by the third-parties, and therefore falls under their respective terms and conditions.

Tech Support

Learn more about Twitter widgets: support.spinetix.com/wiki/Finance_widgets.

Weather Widgets

Weather widgets enable users to automatically display data such as current weather, weather forecast, etc.



Weather Widgets' Selection


There are three Weather widgets to choose from: **Current Weather**, **Weather Forecast Horizontal**, and **Weather Forecast Vertical**.

Editing Weather Widgets

To edit, simply drag and drop the chosen widget to layout, playlist or schedule. The chosen widget will be automatically copied into the current project.

Weather Properties

To setup widget:

1. Click on this button ,
2. Choose the weather channel (two free of charge, and two fee-based),
3. Search for a city, and customize furthermore as needed.

Please note that the weather data is provided by the third-parties, and therefore falls under their respective terms and conditions.

Tech Support

Learn more about Twitter widgets: support.spinetix.com/wiki/Weather_widgets.

Support

SpinetiX provides the following Elementi widgets support:

Support Wiki

Elementi widgets Wiki support is available under ***support.spinetix.com/wiki/widgets***.

Video Tutorials

Elementi widgets video tutorials are made available under respective widget pages.